

May 2008
School Travel Plan Review

School Details

School name: L'Ile aux enfants Ltd

School address: 22 Vicar's Road
London NW5 4NL

Lead STP contact name: Sophie Routier

Contact numbers: (Office) 0207 435 0565
(Fax) 0207 267 0578

Contact email if available: sroutier@ileauxenfants.co.uk

LEA/School DCSF reference number: 2026385

Problems identified in original School Travel Plan document:

Problem	Is this still an issue? Yes/No
School catchment's area is wide spread in North London	Yes, although a new admission criteria is the proximity of pupils.
Closeness of tube station and delays of Silver link	Yes
Minibus services are expensive and do not have a parking permit	Yes
School has no outdoor space for bikes	Yes, although one bike rack has been installed on pavement outside school
No pedestrian crossing	Yes, request denied
Park and walk to school	Yes, the Lido which was identified as an area to park and walk is now a pay and display area.

New problems/concerns that have arisen since the original plan was submitted

Details of the issue/concern	How was issue identified?	Who is affected?	Possible solutions?
Staff and pupils will not leave their bike on public pavement for fear of being stolen.	Last year one Staff member parked her bike only inside the building	Staff members/pupils	Rent premises to use as a secure bike shed.
The Minibus company has no parking permit, and has threatened to stop its service if ticketed.	Mini bus company.	All pupils using the minibus	Get parking permit for the school bus.
Road safety for children. Lack of pedestrian crossing.	Parents and staff	All pupils walking to school.	Re-apply for a zebra crossing, possibly within STP.
Walk on Wednesdays (WoW)	Parents	All pupils walking on Wednesdays	Change WoW to WoF (Walk on Fridays)
Removal of parking permits will take away motivation for car share	Parents	Car users	Encourage car share by promoting other advantages of car sharing (time saving, reduce cost of petrol)
No take up on walking bus	Parents	Pupils who walk	No longer a target as parents already walk

Consultation

Pupils:

All pupils participated in the hands up survey.

Staff:

Head teacher

Teachers' feedback

Parents:

Parents Association (APE)

Survey analysis

Our natural catchments area is wide as we are the only French school in North London.

We have been communicating heavily with parents on other means of transportations to reduce car usage.

In addition, proximity to the school is now a selection criteria in our admission policy.

The above facts explain the following figures (versus last year).

1% decrease in single car trips to the school.

1% increase of car share.

1% increase in public transport.

1% increase in school bus usage.

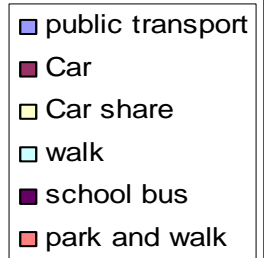
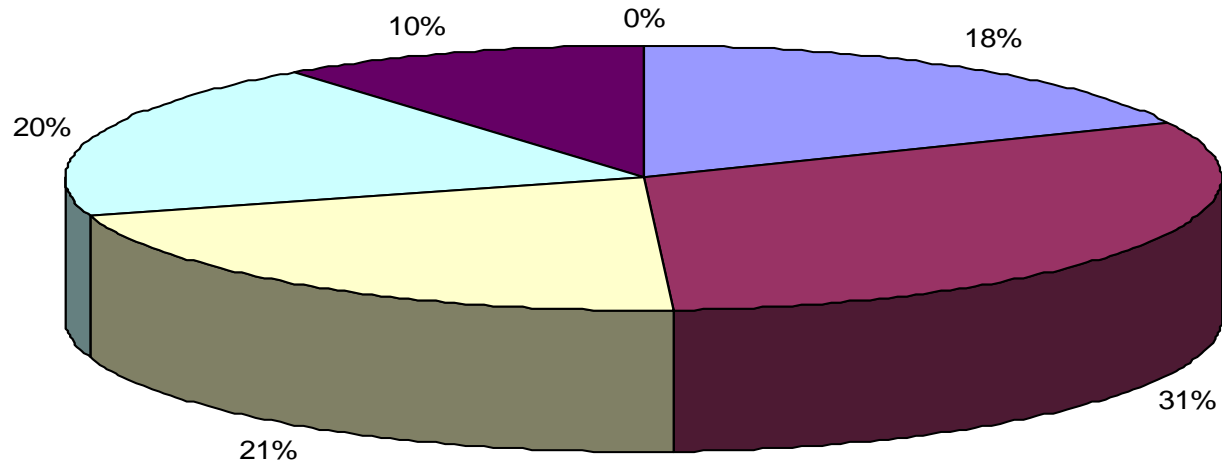
There was no identification of park and walk to school from last year survey.

This year, the survey shows 11% walking and 8% park and walk to school.

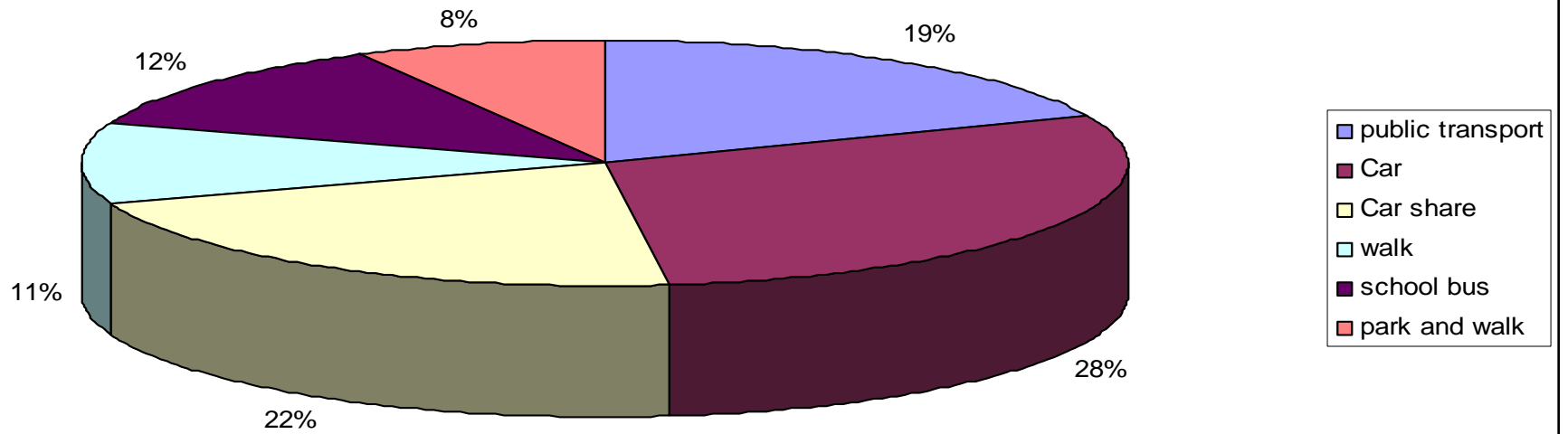
There has been no identification of pupils or staff cycling to school.

In both surveys we have a nearly 100% answer rate which shows the reliability of these figures.

2007



2008



Hands Up Survey Results Q1

Date of survey	20th May 2008
-----------------------	---------------------------------

How students and staff usually travel to school

Mode of Travel	Students	Staff
Car (not sharing)	52	
Carshare (travelling with someone who lives at another house)	44	1
Rail (Train, Tube, DLR, Tram)	23	14
Bus	12	
Bicycle		
Walk (all the way)	19	2
Park and Walk (Drive part and walk part)	17	
Other (please list each case below)	24	
Grand totals	191	17
Total number of all students on roll in school	195	
Total number of all staff employed at school		17

<p>Please list all other methods of transport reported and quantities of each</p> <p>Mini Bus Ecole Express : 23 Moto : 1</p>
--

Hands Up Survey Results Q2

Date of survey	20th May 2008
-----------------------	----------------------

How students and staff would like to travel to school

Mode of travel	Students	Staff
Car (not sharing)	75	7
Car share (travelling with someone who lives at another house)	12	
Rail (Train, Tube, DLR, Tram)	31	10
Bus	13	
Bicycle	25	
Walk (all the way)		
Park and Walk (Drive part and walk part)		
Other (please list each case below)		
Grand totals	187	
Total number of all students on roll in school	195	
Total number of all staff employed at school		

Please list all other methods of transport reported and quantities of each

Mini Bus Ecole Express : 10

Moto : 15

Roller : 6

Objectives and targets

- RED: No progress – target in danger of not being met
- AMBER: Making steady progress towards target
- GREEN: Targets met

Existing Action plan for 2007-2008 including Objectives and Targets is set out below.

Objectives	Targets	What	Action needed	When	Who
Increase number of pupils walking to school	To participate in the walk to school weeks twice a year by June 2008	Organise/promote Camden walk to School weeks.	Notes and mails to parents. Distribution of stickers / include pupils who could “park and walk” if live far.	May / October 2007-2008	Florence French/ Parents’association (Quitterrie Jarroson)
Increase number of pupils walking to school	Increase the number of pupils walking to school from 35 to 45.	Promote walk to school once a week.	Notes and mails to parents. Distribution of WoW wallcharts at the start of each month and request	June 2008	Florence French/ Parents’association (Quitterrie Jarroson) Simon Bishop

			badges at the end of each month for pupils that have participated		(Camden STP Officer)
To provide road safety to pupils	To obtain 25 fluorescent jackets from Camden and to hand these to students who will be participating in the park and walk scheme	To promote walking to school	Order from Camden	Jackets ordered on 11 March 2008	Rachel Pastre/ Florence French
Reduce number of car trips/increase number of pupils walking to School	Increase the number of pupils participating in park and walk from 0 to 20 by June 2009	Set up Park and walk from Lido. Organise walking bus from NW3 and NW5	Volunteer parents/ rota volunteers/ do risk assessment/ distribute safety jackets	December 2008 Set up walking bus by 30 September 2007. Operation by 31 December 2007	Parents 'association (Quitterie Jarroson) with class reps
Provide pupils, staff and parents information on sustainability and school travel	To ensure the school website is updated at least once a term by June 2008	Place new Travel plan on web site/ at school Keep school's web site up-to-date with Camden/other campaigns as soon as	Review of website/get new info from Camden Council	Ongoing	Florence French

		approved by DfES			
Provide pupils, staff and parents with information on sustainability and school travel	To place an article in school newsletter about the STP	Information on STP and other environmental issues	Write newsletter article	April 2007	Parents' Association (individual rep for newsletter at relevant time)
Reduce number of car trips / increase number of pupils walking	To have written a letter to parents regarding school travel by	Inform new parents of STP objectives and to encourage parking away from School	Notes to parents and maps emailed to parents	By 30 September 2007	Françoise Chailleux (Head teacher) and Parents' association (Quitterie Jarroson)
Reduce number of car trips	To continue pre-school child care service	Continue Pre-school child care	Organise carer	September 2007	Florence French, Françoise Chailleux
Reduce number of car trips	To continue post-school child care service by September 2008	Continue Post school child care	Organise carer and insurance	September 2007	Parents' association (Quitterie Jarroson)
Increase number of car share trips	To increase the number of pupils who car share from 20% to 25%	Create new postcode map which shows the catchments of pupils residences in relation to the school in order to identify more car shares for consultation by parents	Ask Camden for large scale map of area (excel form of postcode already sent) and use pin board in school entrance. Index of addresses by area or routes/get help from	September 2007 NOTE: sent to all parents by email in November 2007	Florence French and Parents' Association (Quitterie Jarroson) and Simon Bishop (Camden STP Officer)

			Camden (using GIS software)		
To encourage legal parking and road safety	To place an article in school newsletter about the risks of illegal parking	Promote legal parking	Notes to parents	By 30 September 2007	Florence French/Françoise Chailleux
Road Safety	To provide road safety training for 25 pupils (number of children in CM2 class-equiv to year 5) by June 2008	Road safety course for 10/11 year old	Contact Camden Safety Team for Schools for course / check costs/get subsidy for cost	30 June 2008 Course held week 10-18 March 2008. organised with Belita Clahar of CC	Françoise Chailleux and Camden Road Safety Training Officer (Marina Kroyer)
Road Safety	To make a request to Camden for inclusion of proposal for a new Zebra crossing outside the school.	Ask Camden for new Zebra*	Letter to Camden Council/find person to contact at council (Road Safety engineer)	As soon as plan is approved by DfES / by June 2007 Note: Now done. Request refused by Council for, inter alia, budget reasons	Florence French and Camden Road Safety Engineer (Chris Nicola)
Road Safety	To make a request to Camden for inclusion of proposal for the installation of	Installation of protection barriers outside school, better lighting	Ask Camden Council Safety Team School for better lighting and protection barriers outside School/identify who	30 June 2007 Request refused (no funds)	Florence French and Camden Road Safety Engineer (Chris Nicola)

	barriers outside the school in a bid for funding by TfL by June 2007		to contact		
Cycling (staff-already cycle but need to keep bike inside school building for safety)	To enable staff who cycle to park	Bike racks: ensure bike racks (2 racks approved by Camden are installed	Contact Dave Stewart at Camden Council	Done. 2 stands installed end March 2007.	Florence French and Camden Engineer (Dave Stewart)

New Action Plan 2008-2009 including objectives and targets is set out below:

Objectives	Targets	What	Action needed	When	Who
To get pupils motivated by walking by involving them in the walk to school week scheme	To participate in the walk to school weeks twice a year by June 2009	Organise/promote Camden walk to School weeks.	Notes and mails to parents. Distribution of stickers / include pupils who could “park and walk” if live far.	October 2008 and May 2009	Sophie Routier (SR)/ Parents’association (Quitterrie Jarroson)
Increase number of pupils walking to school every week by promoting WoW	Increase the number of pupils walking to school by double (up to 40) by June 2009	Promote walk to School on Fridays (instead of Wednesdays).	Notes and mails to parents explaining that they can walk on Fridays instead of Wednesdays	October 2008	Sophie Routier (SR)/ Parents’association (Quitterrie Jarroson)/ Camden STP Officer-Steve Hands
To encourage more public transport usage	Achieve 40 pupils using public transport	Promote public transport	Website update of school routes and update of links to tfl	December 2008	Sophie Routier

TO encourage Park and Stride schemes so pupils that live far can be involved in the Wow scheme by walking part of the way	Increase the number of pupils participating in park and walk from 0 to 20 by June 2010	Identify other drop off points and set up Park and walk.	Volunteer parents/ rota volunteers/ do risk assessment/ distribute safety jackets	Set up by 30 September 2009. In operation by 31 December 2009	Parents 'association (Quitterie Jarroson) with class reps
Provide pupils, staff and parents with Information on sustainability and school travel	To ensure the school website is updated at least once a term by June 2009	Place STP review and STP on web site and at school Keep school's web site up-to-date with Camden soon as approved by DfES	Review of website/get new info from Camden Council	June 2009	Florence French
Provide pupils, staff and parents with Information on sustainability and school travel	To place an article in school newsletter about the STP by April 2009	Information on STP and other environmental issues	Write newsletter article	Easter issue	Parents' Association Sophie Routier
Reduce number of car trips by general	To have written a letter to parents regarding school	Inform new parents of STP objectives and to	Notes to parents and maps emailed to parents	October 2008	Françoise Chailleux (Head teacher) and Sophie Routier

promotion of school travel plan	travel	encourage parking away from School			
Reduce car congestion at peak hours for the benefit of local communities	To continue pre-school child care service	Continue Pre-school child care	Organise carer	September 2008	Françoise Chailleux
Reduce car congestion at peak hours for the benefit of local communities	To continue post-school child care service	Continue Post school child care	Organise carer and insurance	September 2008	Parents' association (Quitterie Jarroson)
Reduce number of individual car trips by promoting car share	Achieve 25% car share by June 2009	Create new postcode map which shows the catchments of pupils residences in relation to the school in order to identify more car shares for consultation by parents	Camden supplies map using GIS software. School provides Camden with postcodes on excel sheet	31st October 2009	Sophie Routier and Camden STP Officer
To encourage Road safety and	Write to parents of the risks of	Promote legal parking	Letter to parents	By 31 October 2009	Sophie Routier/Françoise

raise awareness of pupils and parents	illegal parking				Chailleux
To teach road safety training in lessons	To provide road safety training for app 25 pupils (number of children in CM2 class-equiv to year 5)	Road safety course for 10/11 year old	Contact Camden Safety Team for Schools for course	By 30th June 2009	Françoise Chailleux and Camden Road Safety Training Officer (Belita Clahar)
Reduce car trips	Achieve 45 pupils as the number of pupils walking to school.	Write to new parents to inform them of car shares and public transport alternatives	Letter included in parents offer for place at the school or given on induction meeting	30th June 2009	Françoise Chailleux/Sophie Routier
Achieve silver accreditation	Apply for accreditation	Ensure all requirements are met	Complete and send application form	30th June 2009	Sophie Routier

Monitoring & Reviewing Our Plan

Our next hands up surveys will be on:

February 2009

Our Annual Progress review will be completed in:

February 2009

Our full review of the School Travel Plan will be completed in:

February 2010

The person(s) responsible for ensuring the annual review will be done is:

Sophie Routier

When reviewing our School travel Plan we will take into consideration any issues arising from new developments in education and transport since the original STP was completed.

Sign off and formal approval of STP annual review

School signatures

The following signatures confirm the school management have read the contents of this document. By signing this document the school is committing itself to make every effort to resolve problems identified within the enclosed document and implement the actions identified. The school further acknowledges that they have committed to achieving all targets highlighted in their action plan and to the annual review and monitoring of the plan.

Headteacher
(compulsory signatory)

Chair of Governors
(compulsory signatory)

School Council Representative
(optional)

Parent Governor

Please feel free to have as many signatories as you wish

Where your plan identifies action points for groups or individuals outside of the schools or Council (eg Police officers, bus operators) then these individuals must be signatories.

Council signatures

The following signatures confirm that the document has been Quality and Assessment checked by representatives from The London Borough of Camden.

School Travel Plan Officer

Director of Education
(compulsory signatory)

Director, Planning
(compulsory signatory)